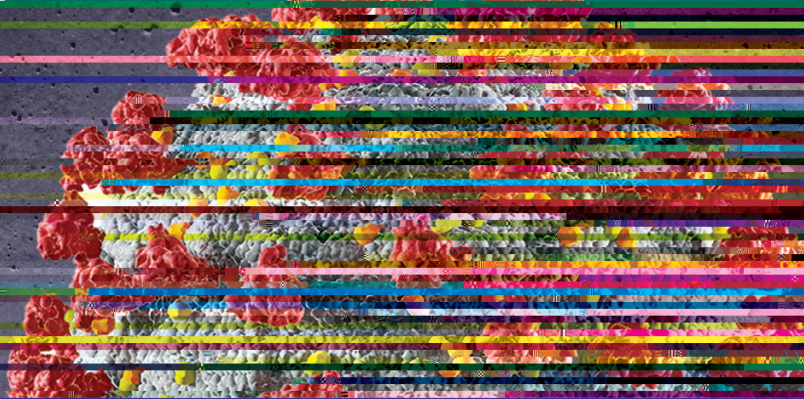


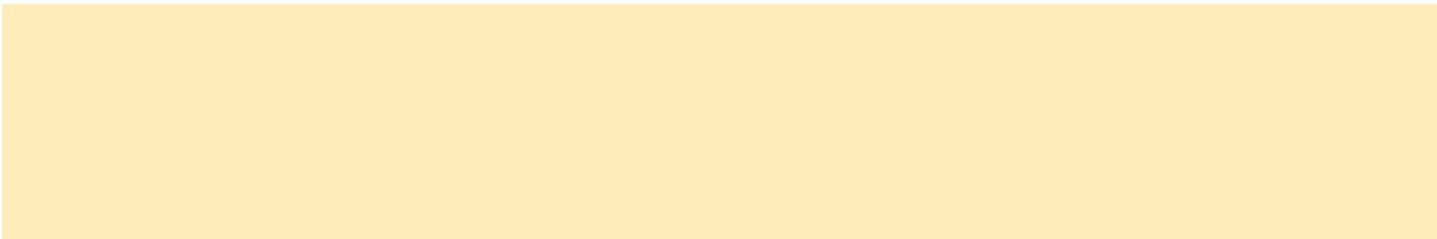
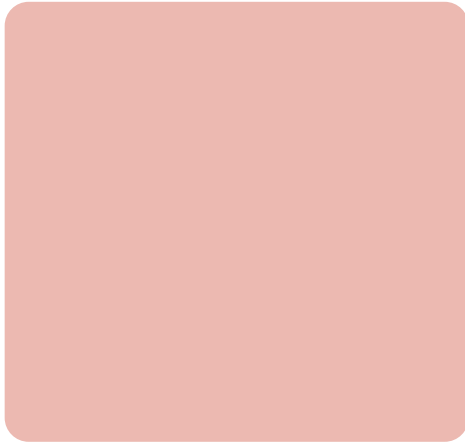
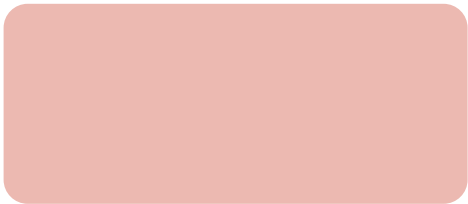


NEW YORK STATE Department of Health

NYSDOH COVID-19

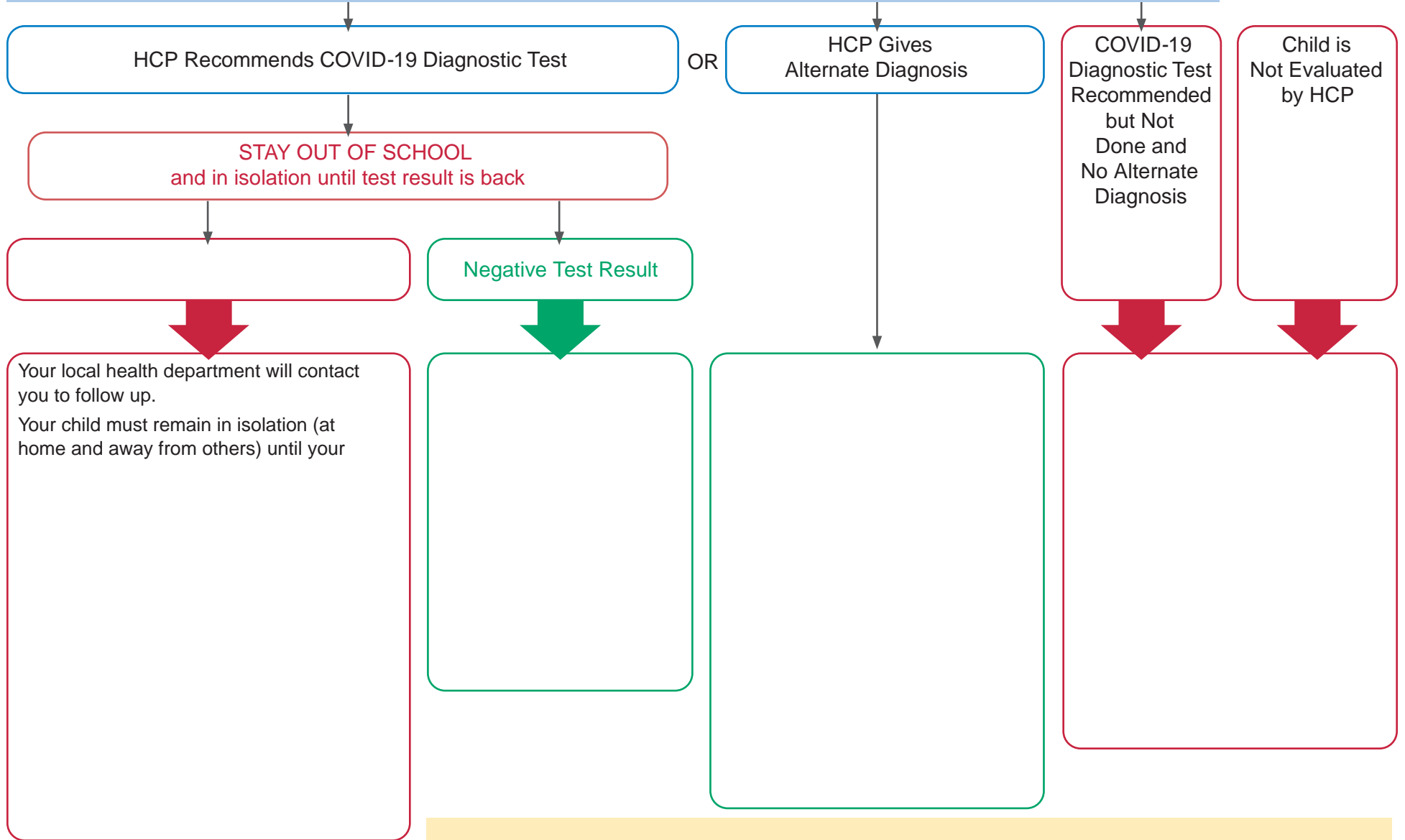


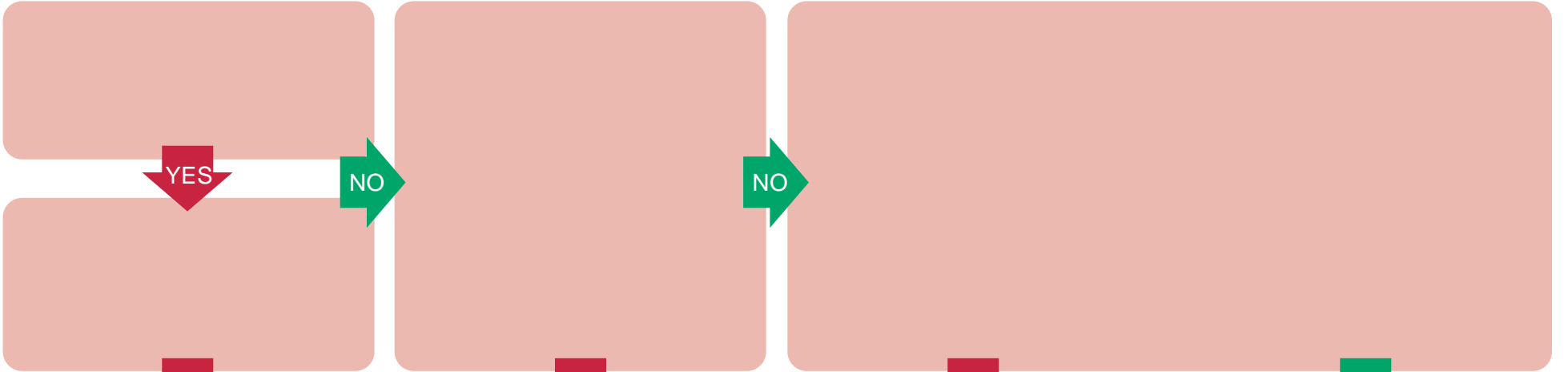
# Pre-K to Gr 12 COVID-19 Toolkit



# My child has COVID-19 symptoms. When can they go back to school?

HEALTHCARE PROVIDER HCP EVALUATION FOR COVID 19 can be in-person or by video/telephone as determined by HCP





YES

Empty box with a red border.

YES

Empty box with a red border.

YES

Empty box with a red border.

NO

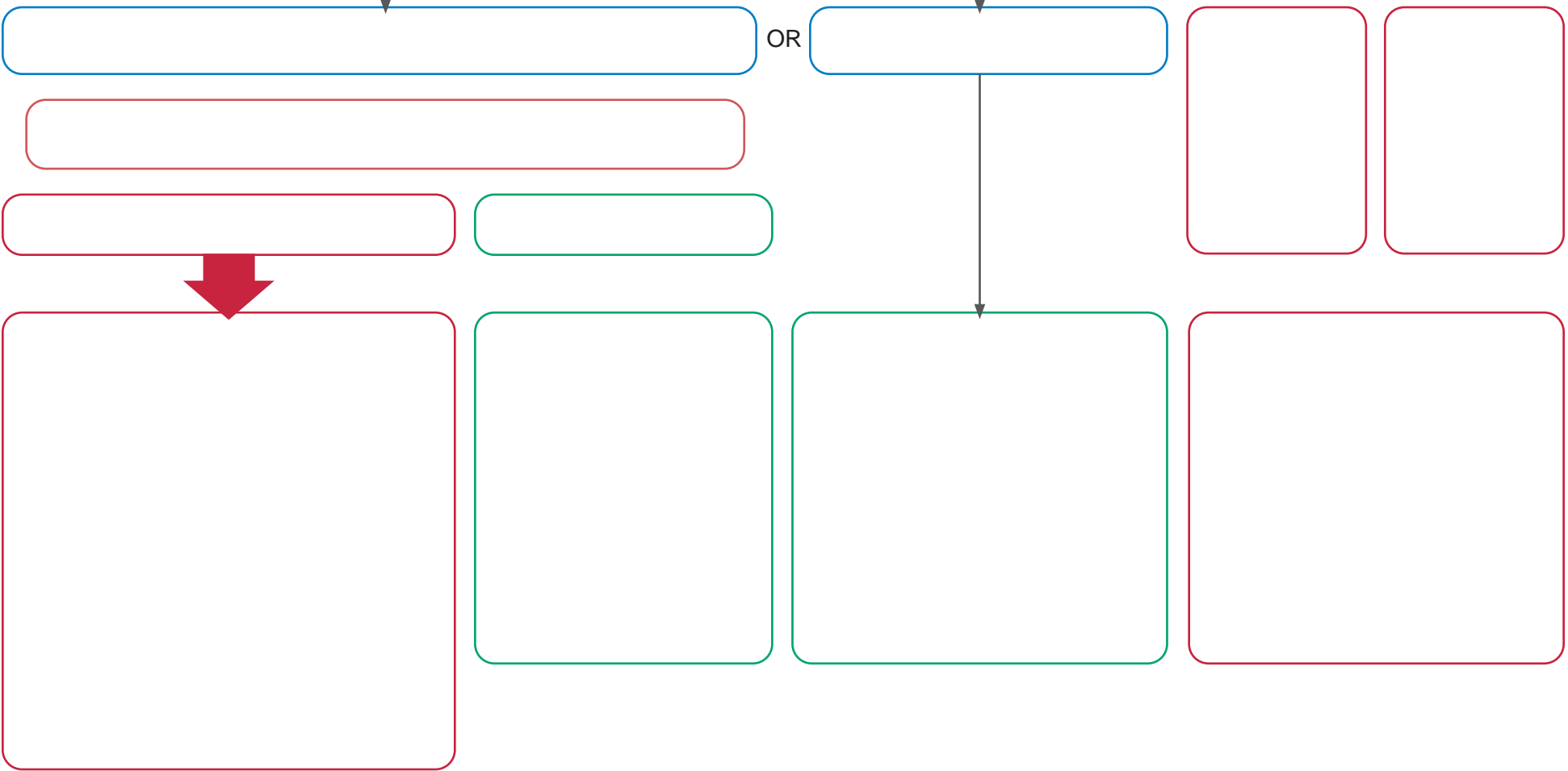
Empty box with a green border.

Empty box with a red border.













# COVID-19 School and Local Health Department Coordination for Contact Tracing

Notify the local health department (LHD):

- Immediately upon learning of a positive case
- 48 hours after symptom onset in a staff member or student if no HCP evaluation or test result has been received. The LHD will collaborate with the school for contact tracing and to identify contacts.

Begin to identify contacts of the case to provide to the LHD.

Provide the LHD with contact information of school personnel who will assist in the LHD's contact investigation. Include the names and phone numbers of at least two points of contact, as appropriate, such as:

- School Principal
- Administrative Support Person
- Principal Designee

Provide the LHD with a list of people who are possible contacts of the case including:

- Contact's full name
- Parent(s)/Guardian(s) full name(s)
- Phone number(s)
- Home address
- Nature of contact (e.g., persons in same classroom, bus, etc.)
- Student, teacher, or type of staff member

Contacts will include students/staff who had exposure to the individual suspected or confirmed to have COVID-19 beginning two days before their symptom onset (or if the case was asymptomatic, two days before the date

THEN

THEN